

A scenic view of a paved road winding through a forested valley towards a large, layered mountain peak. The road is asphalt with a dashed yellow center line and white edge lines. The surrounding landscape is filled with dense evergreen trees, some showing autumnal colors. The mountain in the background has distinct horizontal geological strata.

Building Our Future

ACSD's School Facilities Planning

Session Objectives

1. Provide an overview of the journey that Addison Central School District has taken to create a roadmap for facilities investment
2. Identify both the opportunities and challenges ACSD has faced in the context of the economic and demographic impacts of rural Vermont
3. Highlight key learning in the design and implementation of a facilities master planning process, including engaging community, compiling data, and general process development

Session Objectives

1. Provide an overview of the journey that Addison Central School District has taken to create a roadmap for facilities investment
2. Identify both the opportunities and challenges ACSD has faced in the context of the economic and demographic impacts of rural Vermont
3. Highlight key learning in the design and implementation of a facilities master planning process, including engaging community, compiling data, and general process development

Who We Are

Towns: Bridport, Cornwall, Middlebury, Ripton,
Salisbury, Shoreham, Weybridge

Enrollment: +/- 1700



The Impact of Unification

ACSU(Union) to ACSD(District) on July 1, 2017

Eight separate boards to one unified board

First unified budget in FY18

Unified Facilities Management

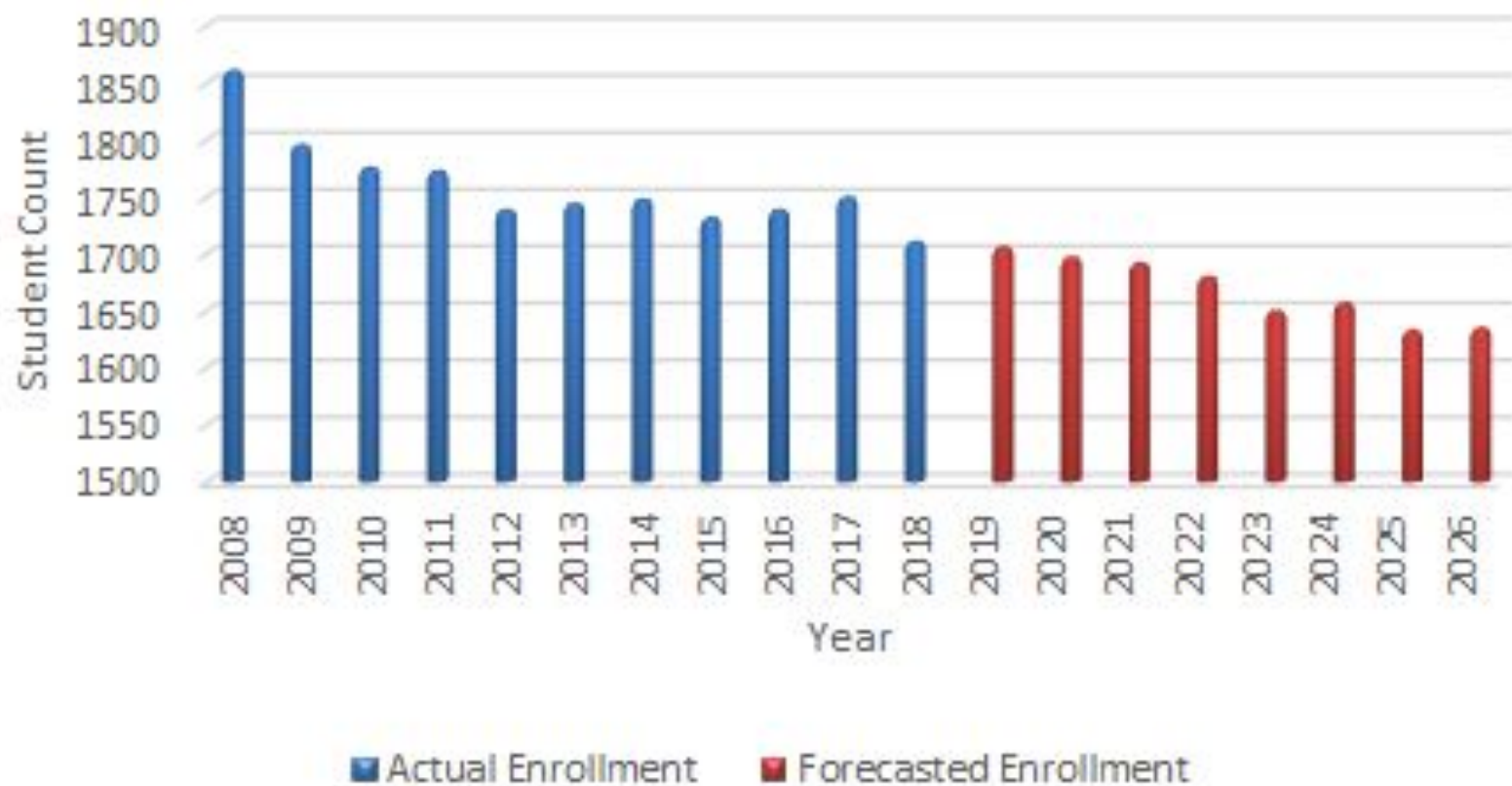
One budget allowed for new approach

Reality: History of significant deferred maintenance in most schools

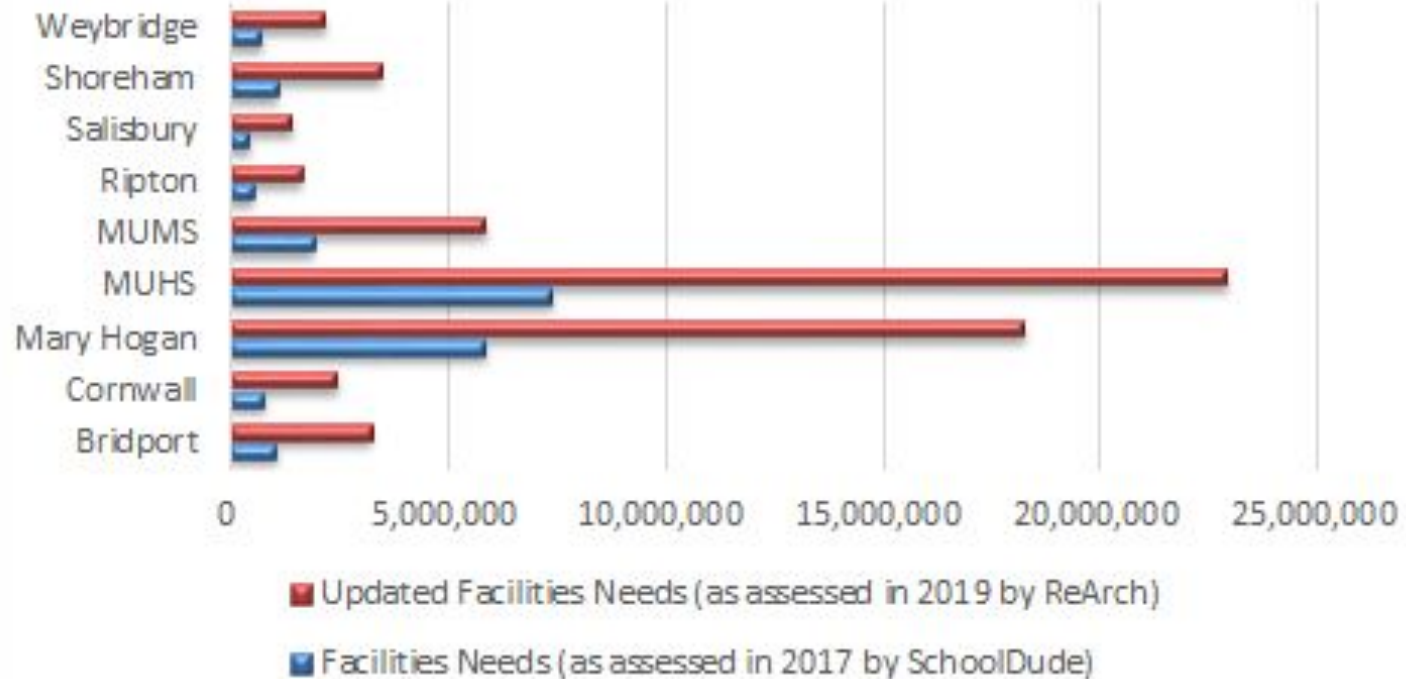
Pressures and Realities

1. Equity of opportunity and access challenging across district
2. Enrollment decline
3. State and local pressure on property tax
4. Aging facilities require significant investment

Actual and Forecasted Enrollment



Necessary Maintenance and Upgrades



Total facilities needs as assessed in 2019 by ReArch: \$61.5 million

Genesis of Facilities Master Plan

International Baccalaureate and grade configuration



Ethos of Facilities Master Plan

To move from reactive to **proactive** in establishing a solid foundation for our community

The status quo is unsustainable

Strive for equity and excellence

Plan Overview

A foundational plan to direct and guide the use of District resources over the next 10 years

A longer range look at the district's complex array of facilities. Planning long-term, proactively as opposed to short-term, reactively

Document will guide the Board and community with future capital improvements, help set priorities and provide a roadmap for future iterations of the Board

Plan Development and Structure

National search of facilities master plans

Reality of contraction vs. expansion

Leadership

Board

Steering Committee

ACSD Facilities Department

Facilities Master Plan Goals

The Facilities Master Plan for ACSD will ensure the following:

- Facilities provide spaces that support the educational programs and goals of the District.
- Schools provide a safe and secure school environment.
- Schools meet current codes and regulations, including requirements for accessibility, fire-life-safety and structural safety.
- Strive for a more equitable balance of resources such as core and non-core, co-curricular and extra-curricular programming
- Achieve increased efficiency and effectiveness with a larger pool of resources
- Schools continue to foster relationships which support the engagement of community

ACSD Board Guiding Questions

- How do we ensure all our students have equity of access and resources?
- How do we prioritize an overwhelming list of facility/resource needs at our 7 elementary schools?
- How do we consider new approaches to grade configuration to better serve our Prek-6 population, and consider school choice implications?
- How do we address need to improve operating efficiency and lower costs?
- What are our local community needs that should not be compromised?
- How should the district respond if system capacity is such that school closure is deemed necessary?
- How should the district respond to continued enrollment decline?

Activity: Turn and Talk

Review the plan overview.

How do you see this process being structured in your district?

What factors would be most important to consider?

Facilities Master Plan Timeline

September 2017 - June 2018: ACSD Facilities Master Plan process development

June 2018: ACSD Facilities Master Plan Steering Committee formation

November 2018: First Community Dialogues conducted

February 2019: Board Facility Planning Retreats

April 2019: Community Dialogues 2 - Option Discussion

August 2019: Elementary School Study initiated

June 2020: Process Completion

Community Engagement

Following well-worn paths

Working to engage all, especially those not immediately affected

Getting attendance without crisis

Costs or Learning: The Quandary

Clarity around impact of financial stress on system with educational outcomes and resources

It's okay to talk about money.

Lessons Learned Along the Way

National vs. Vermont approaches

Process

Transparency and Data

Timelines and Development

Elasticity with focus

Allowing the Board to lead

Staying in the Conversation

Resisting polarization and working together

Insisting on being proactive

TruexCullins

Architecture firm in Burlington, Vermont with K-12 studio

Mission: Harness the power of design to improve our communities

Work both in Vermont and around the world helping schools

Vermont clients include Winooski SD, Champlain Valley SD, Harwood UUSD, etc.

Expertise in design of sustainable high performance 21st century learning environments



Elementary School Study

A collaboration between TXC and ACSD:

TXC: Assist the District in evaluation of their elementary schools from an infrastructure, capacity and educational alignment perspective.

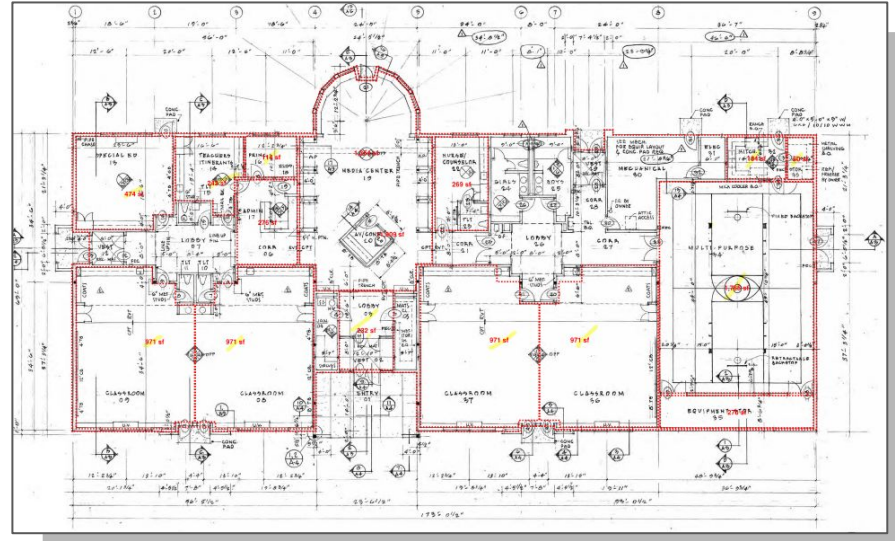
ACSD: Assess the educational, operational and logistical impacts of each option including cost impacts.

Together, these inputs will inform the conversation and allow the facility committee to recommend an option to the school board that consolidates the number of small elementary schools.



Project Approach

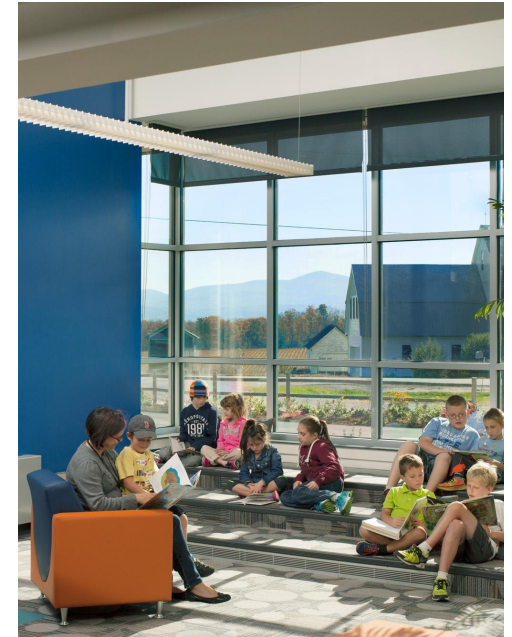
- Facility Evaluations - building and site infrastructure, permits, code, ADA review
- Guiding Principles
- Model Building Program
- Capacity and Floor Plan Analysis
- Consolidation Options
- Cost Analysis



Guiding Principles

The Elementary School experience at ACSD should include schools that:

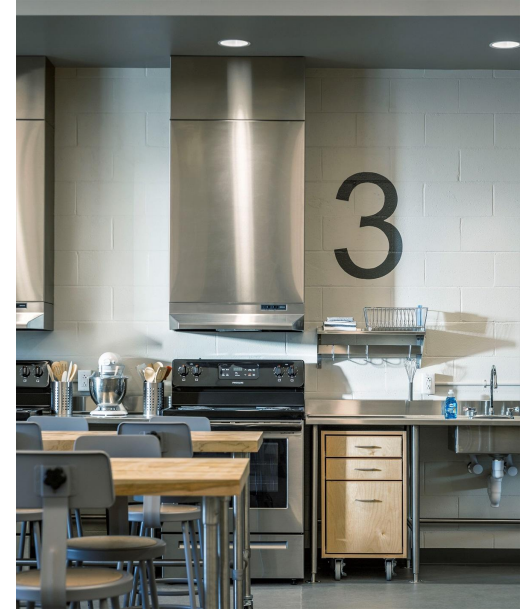
- Create a **welcoming, safe** and secure environment and promote a sense of **community**
- Provide **equitable** academic, social, athletic and co-curricular opportunities for all students of the district
- Are of sufficient size with adequate resources and spaces to support:
 - **Full-time staffing** of both academic and support positions
 - Student **access** to a full range of academic and co-curricular offerings
 - Socio-economic **diversity** at each school



Guiding Principles (cont)

The Elementary School experience at ACSD should include schools that:

- Are of sufficient size with adequate resources and spaces to support:
 - Rich **social opportunities** for students
 - Learning environments with an **optimized number of students** not reliant on multi-age classrooms
 - A full range of **diverse range of learning styles**
- Are connected to **nature**, both planned and wild, and support outdoor learning, sports and exploration of the natural world.
- Demonstrate a commitment to **sustainability** with good fresh-air ventilation and access to natural light



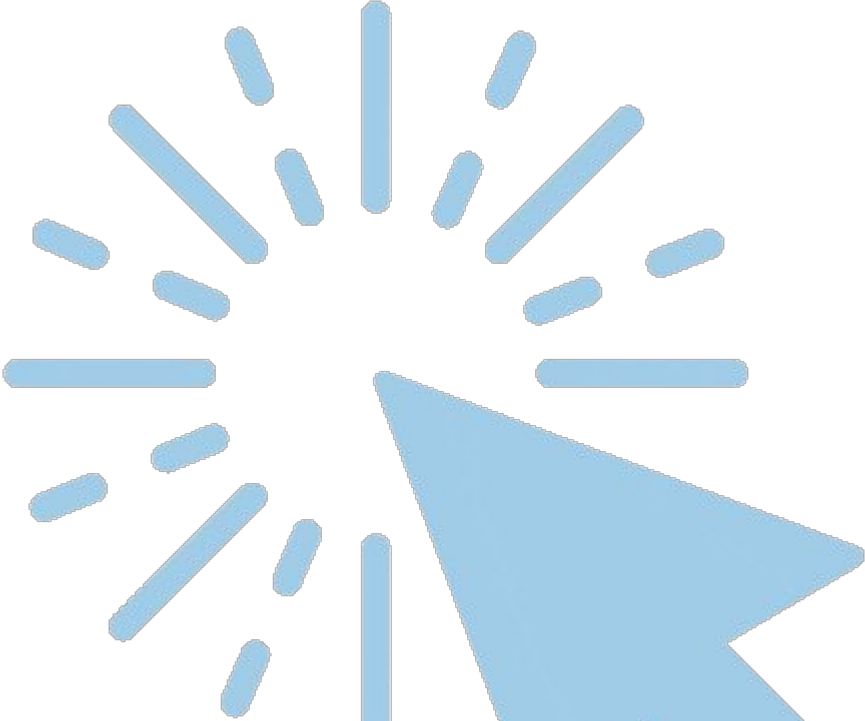
Next Steps

- Complete Facility Evaluations
- Consolidation options
- Educational and Operational impacts
- Cost Estimates
- Recommendations



ACSDVT.ORG →

Boards and Community Tab
Facilities Master Plan



Questions?